

From: [GRUMBO Leon * PUC](#)
To: [TOEWS Kimberly * PUC](#)
Cc: [MOSER Nolan * PUC](#)
Subject: AR 638 Wildfire Mitigation Rules - UPDATE
Date: Wednesday, June 22, 2022 5:15:31 PM
Attachments: [Map.png](#)

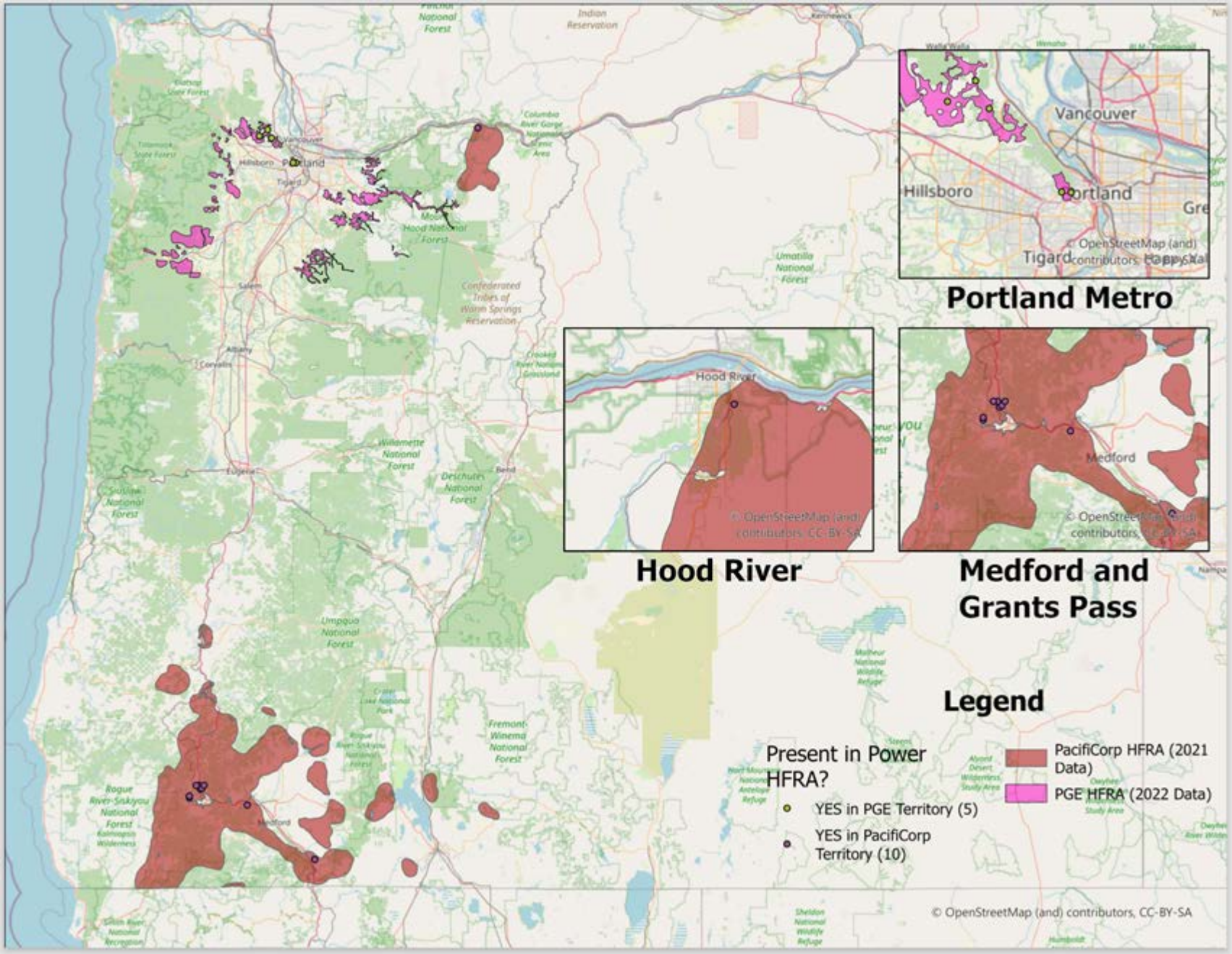
AR 638 Wildfire Mitigation Rules – UPDATE

AR 638 discussion have included consideration of revising Division 28 rules related to the repairs made to communications equipment by electric operators. Staff believes that information related to deteriorated or reject poles in high fire risk areas (HFRA) will help inform Stakeholder comments on this issue. To this end, a map of deteriorated or reject poles located in HFRA which were identified recently by Safety Staff during their analysis of Lumen Technologies, Inc., Safety Report E22-48R (Lumen Statewide Deteriorated Poles) is attached for stakeholder reference.

If you have questions, please contact:

Leon Grumbo
Senior Utility Analyst
Oregon Public Utility Commission
Utility Safety, Reliability & Security Division
503-881-7707
leon.grumbo@puc.oregon.gov

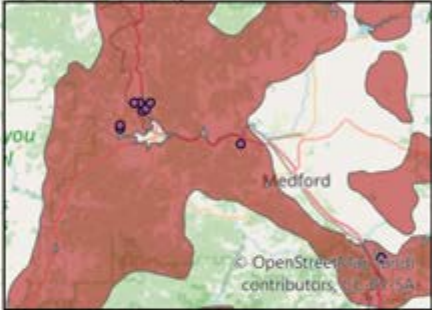
This e-mail states the informal opinions of commission staff, offered as technical assistance, and are not intended as legal advice. We reserve the right to amend these opinions should circumstances change or additional information be brought to our attention. Staff's opinions are not binding on the commission.



Portland Metro



Hood River



Medford and Grants Pass

Legend

Present in Power HFRA?

- YES in PGE Territory (5)
- YES in PacifiCorp Territory (10)

- PacifiCorp HFRA (2021 Data)
- PGE HFRA (2022 Data)