

# 2025 Oregon Wildfire Mitigation Plan Update

UM 2207

February 6, 2025

Presenters:

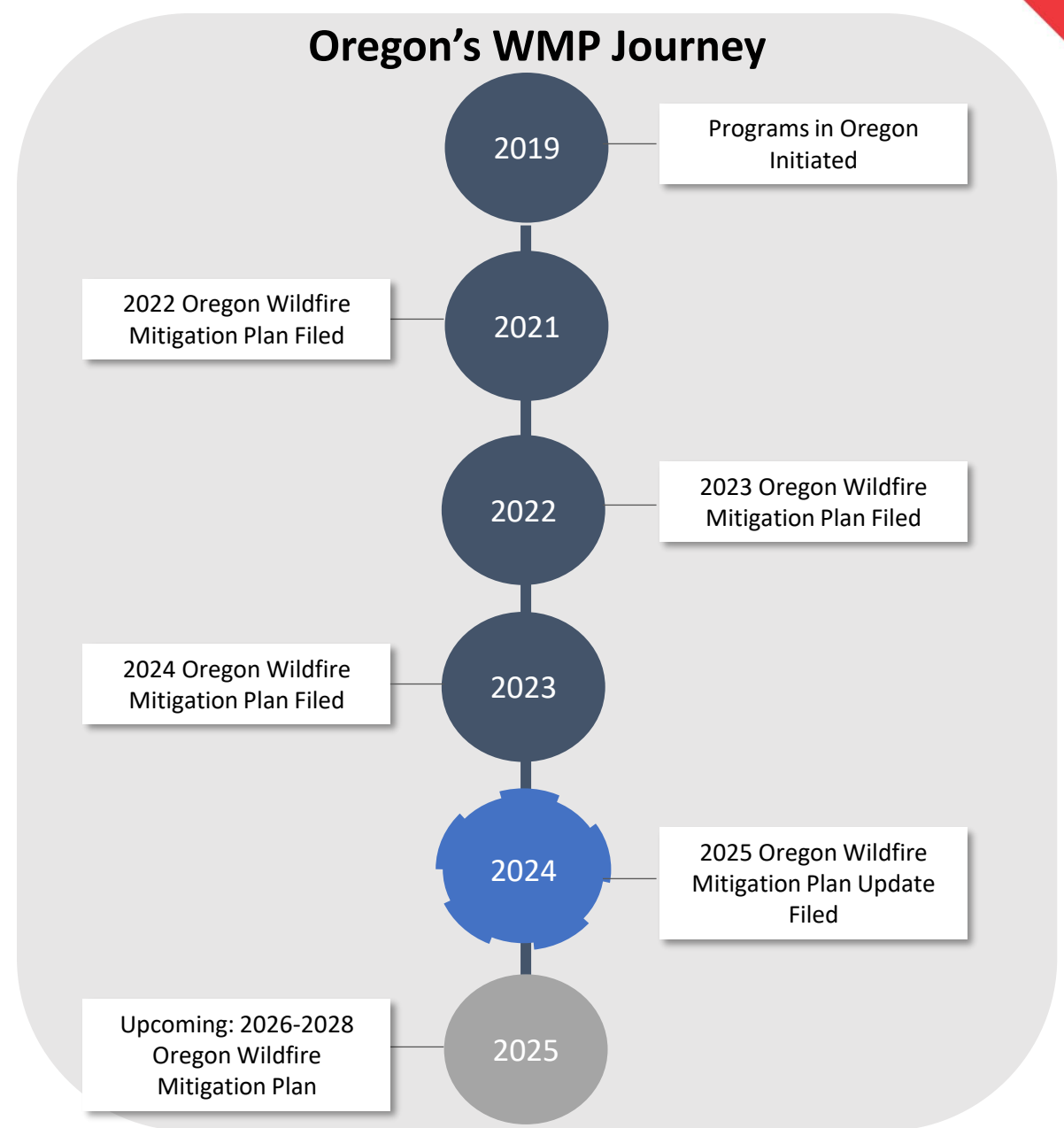
Melissa Swenson, Director, Wildfire Mitigation Program

Hallie Frazee, Wildfire Mitigation Communications Program Manager



# Agenda

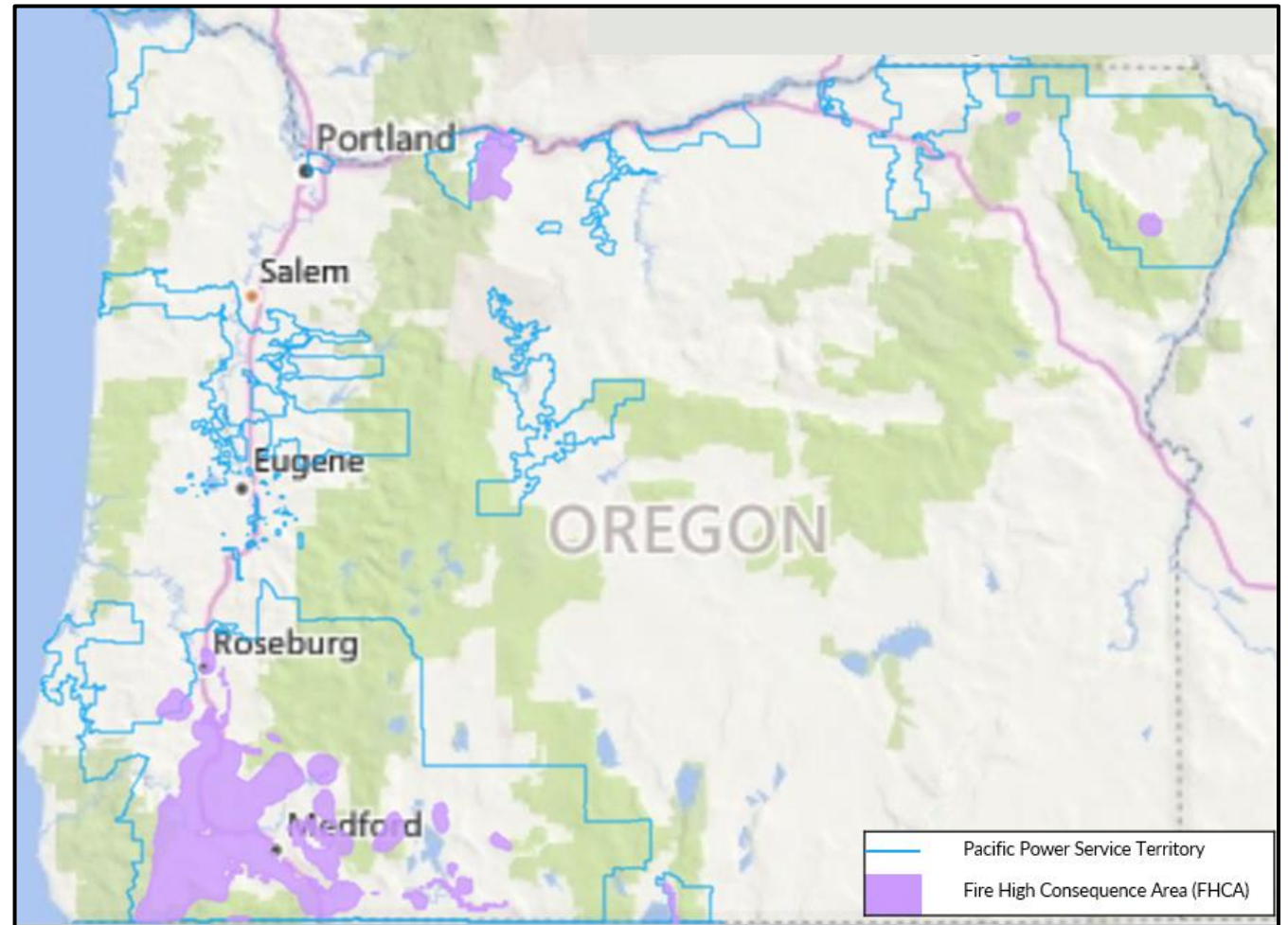
- Plan Foundation and Elements
- 2024 Accomplishments and Learnings
- 2024 Customer Wildfire Season Outreach and Communications
- 2025 Plan Updates
- Data Templates Implementation



# About PacifiCorp

## General Stats

- PacifiCorp provides electricity to approximately **623,000 Oregon customers** via approximately **293 substations**, **19,000+ miles** of distribution lines, and about **3,000+ miles** of transmission lines across nearly **21,000+ square miles**



# Wildfire Mitigation Approach



## Engagement

- Customers
- Public Safety Partners
- Tribal Nations
- Public Utility Commission
- Industry Collaboration



## Situational Awareness

- Baseline risk modeling to inform strategic programs and investments
- Short-term forecasting to inform operational protocols



## Operational Practices

- Implement operational strategies during fire risk periods
- Deploy more sensitive protective coordination equipment
- Installation of new fault indicators



## System Resiliency

- Enhanced inspections and accelerated correction of certain conditions
- Enhanced vegetation management practices
- Line rebuilds



# 2024 Accomplishments



## Engagement

- Hosted nine public wildfire forums
- Participated in over 25 community and public safety partner outreach events
- Over 40 industry collaboration meetings and events



## Situational Awareness

- Baseline risk modeling to inform strategic programs and investments
- Implemented PSPS Circuit Forecast Tool
- Installed 25 weather stations



## System Resiliency

- Over 12,364 incremental trees pruned or removed and over 35,622 poles cleared
- Inspected 116,144 transmission and distribution facilities
- Upgraded or replaced 50 relays and reclosers
- Rebuilt 83 miles of overhead lines with covered conductor
- Upgraded or replaced 50 relays and reclosers
- Replacement of 9,063 expulsion fuses
- Installed 371 communicating fault current indicators (CFCIs)

# Impact of 2024 Operational Practices



## Enhanced Safety Settings

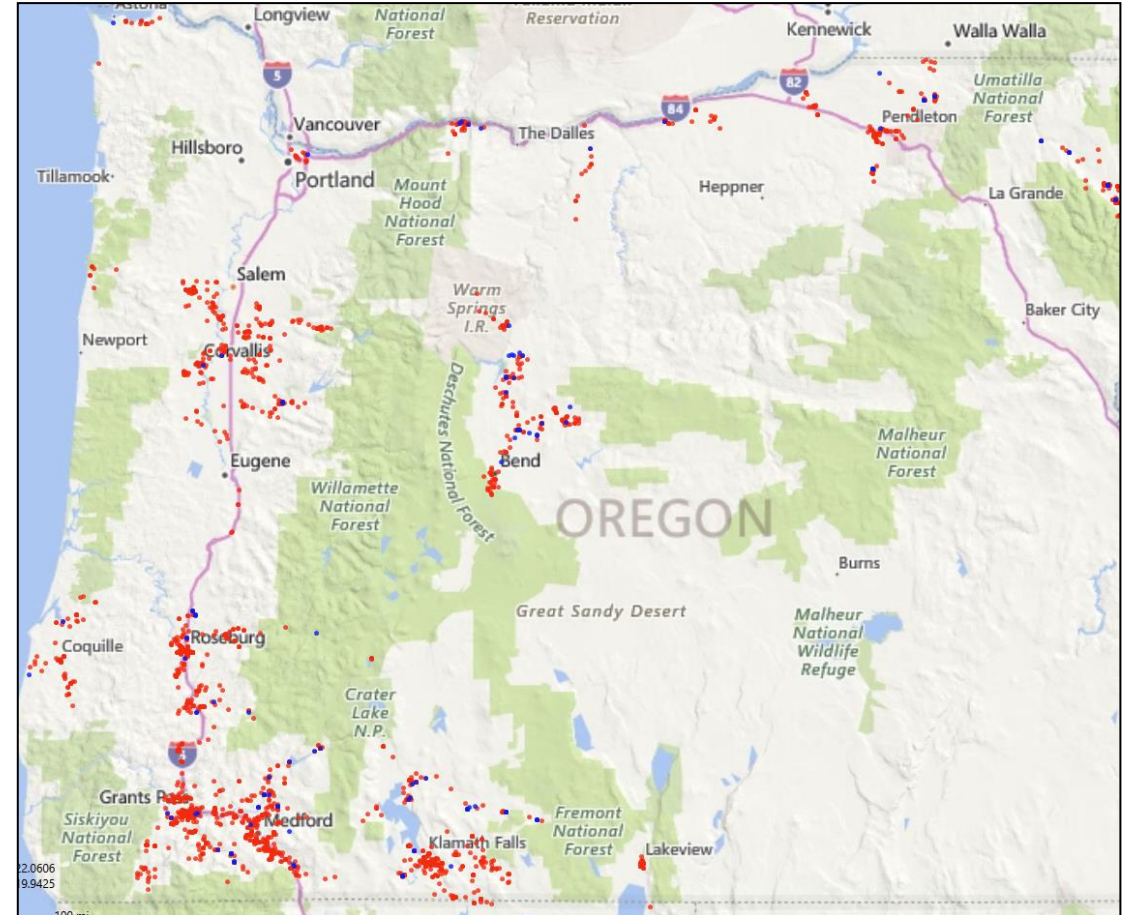
- Enhanced safety settings are enabled across the service territory; well in advance of weather conditions that have historically been related to catastrophic fires.

## Emergency De-energization

- Fires within a specified distance of equipment, based on wind and fuel conditions, results in emergency de-energization.

## Public Safety Power Shutoff

- Proactive de-energization used as a last resort to reduce the risk of wildfires during extreme fire risk conditions.

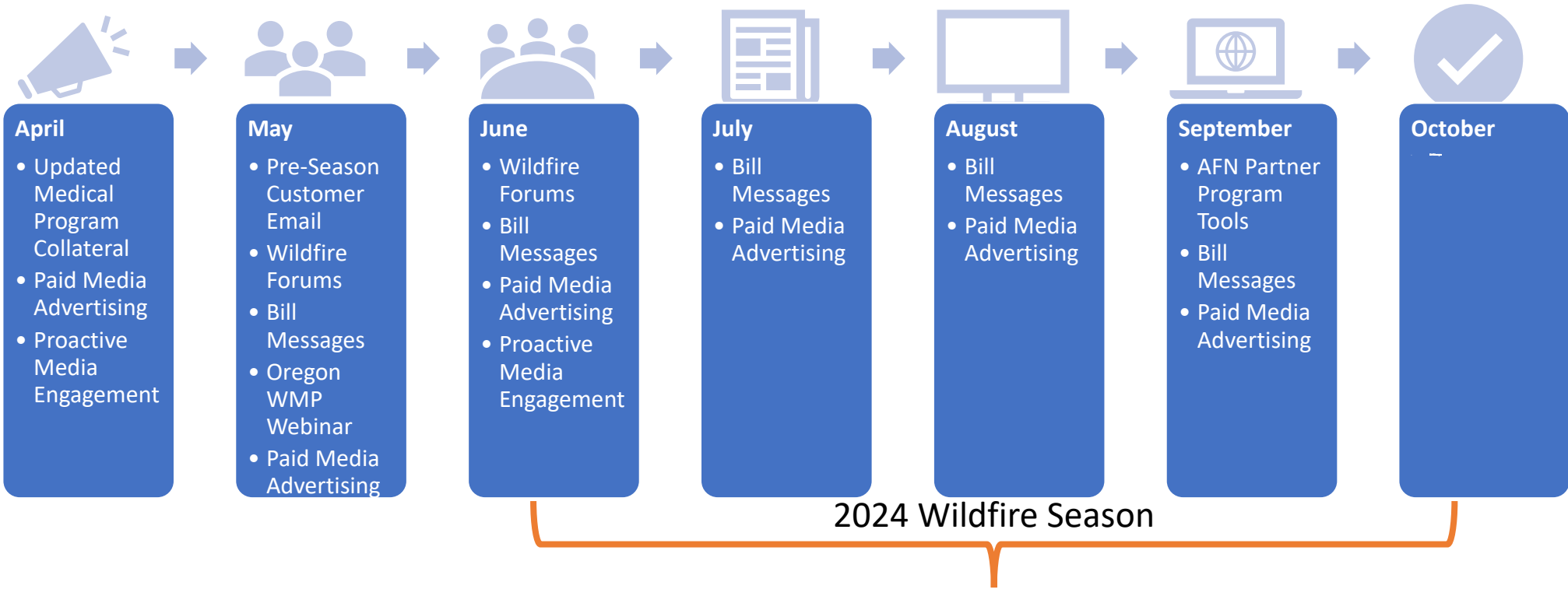


Enhanced Safety Setting De-energization

Emergency De-energization Due to Fire Encroachment

# 2024 Customer Outreach and Communications

# 2024 Wildfire Season Communications and Outreach



Outreach to customers begins before wildfire season and continues through the season.



# 2024 Wildfire Season Communications and Outreach

## Tribal Nations

- Shared wildfire safety information with Tribal Nation's media and publications.
- New Tribal Liaison to lead consultation and outreach efforts with the Tribes.



## Public Safety Partners

- Emergency Management briefings with public safety partners on wildfire preparations and sharing of collateral materials and informational videos.



## Non-Residential Customers

- Regional Business Managers shared wildfire information with their large customers.
- Discussions at local service organization meetings.
- New Access and Functional Needs (AFN) Program Manager to coordinate across programs and outreach efforts.



# De-energization Communications Cadence

- **Public Safety Power Shutoff**
  - Set notification cadence
  - Advanced notice provided in multiple formats



- **Enhanced Safety Settings**

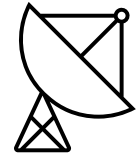
- **When settings are turned on for the season**
  - Email or letter
- **When an outage occurs**
  - Standard outage notifications based on customer communications preferences

- **Emergency De-energization**

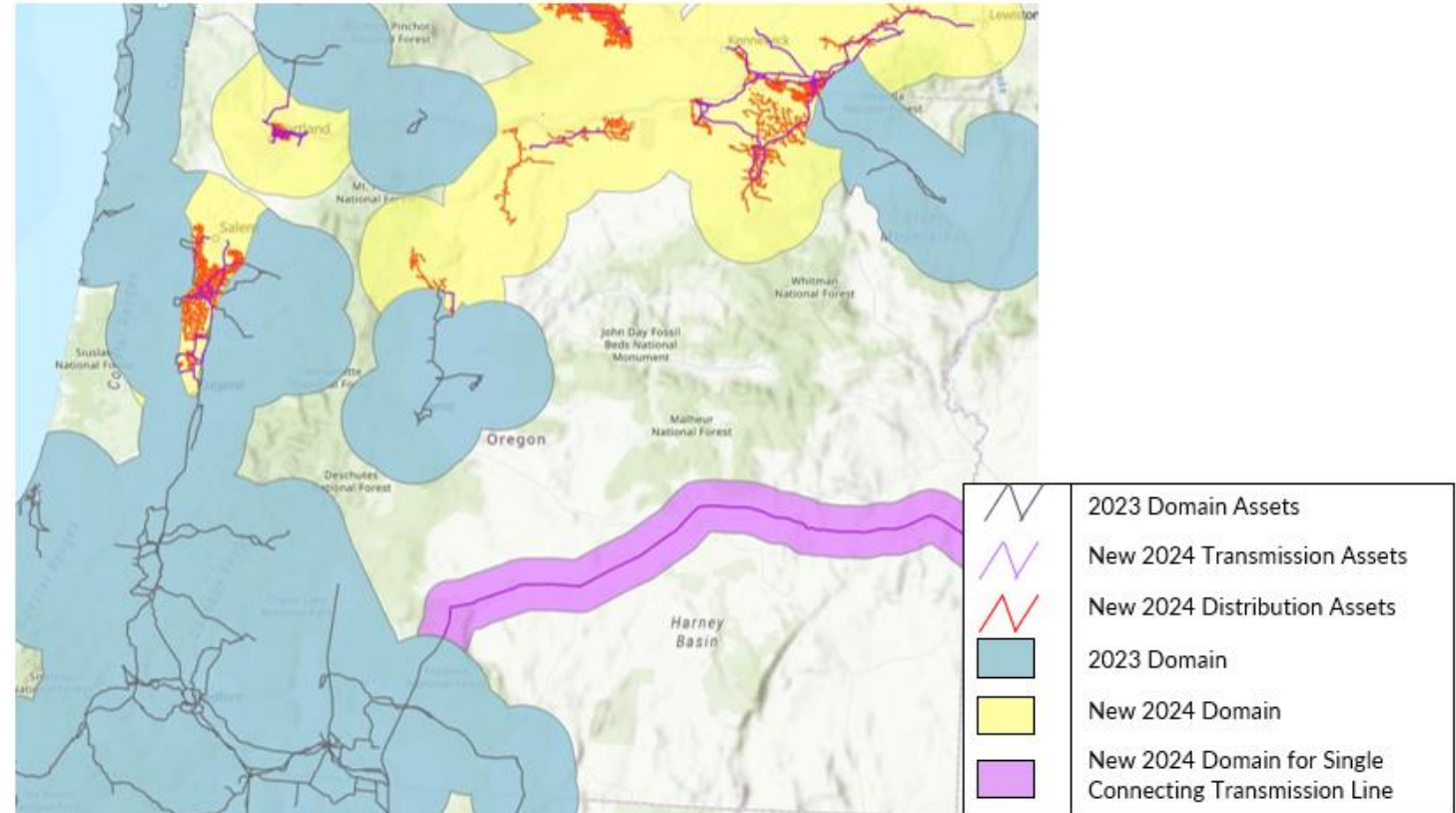
- **Pending:** fires getting close to equipment
  - May be able to provide advanced notification
- **Immediate:** When a fire is reported as too close, power is turned off immediately
  - Not able to provide advanced notification

# 2025 Plan Updates

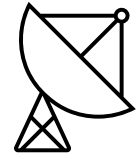
# Changes to FireSight Risk Model



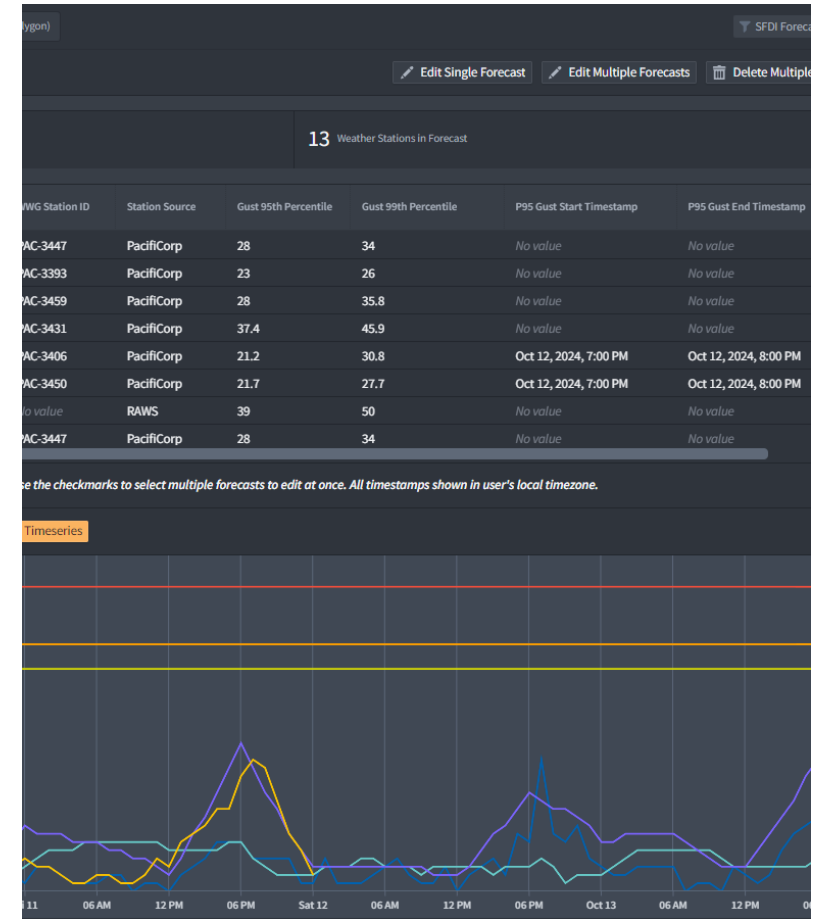
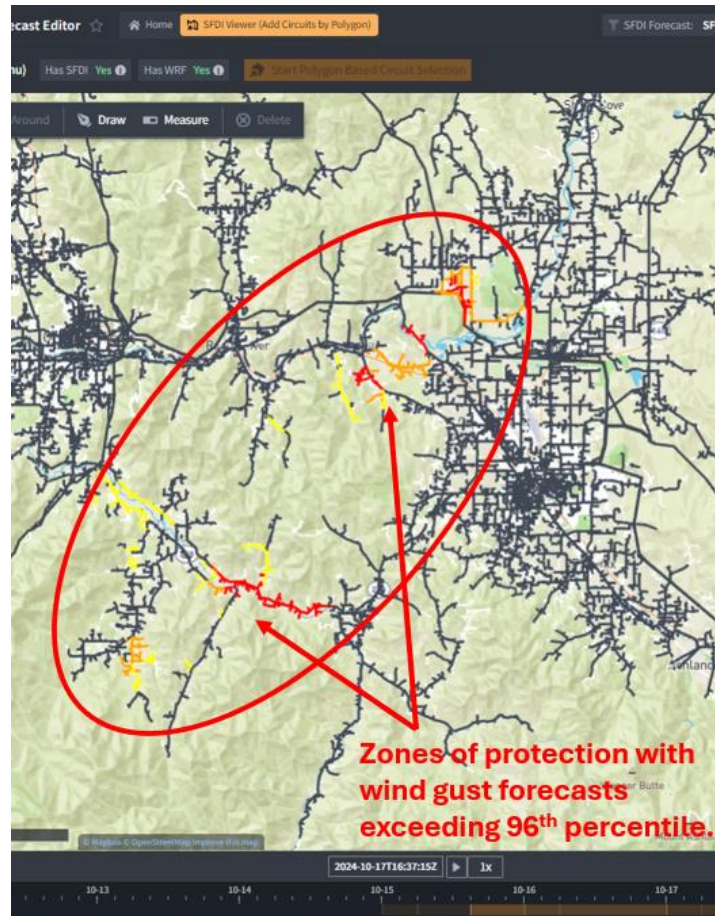
- Expanded domain
- Fuel models updates
- Weather days
- Estimation of live fuel moisture content
- Wildfire urban interface update
- Historic fire incident analysis disturbance analysis



# New Public Safety Power Shutoff Circuit Forecast Editor



- Identifies zones of protection that are forecast to meet the threshold for a PSPS event.
- Forecasts timing of event for each circuit.



# New Initiatives

## Engagement



- **Western Utilities Wildfire Communications Workshop**

## Situational Awareness



- **Wildfire Intelligence Center**

## Operational Practices



- **Distribution Protection Settings Review**

## System Resiliency



- **Line Rebuild – Transmission**
- **Transmission Pole Replacement**
- **Pole Wrapping**



# Changes in Initiative Targets

Initiative	Initiative Subcategory	Units	2025 Target in 2024	2025 Target in WMP	% Change
			WMP	Update	
Community Outreach and Public Awareness	Best Practice Sharing with Other Utilities	Meetings	0	2	100%
Grid Design and System Hardening	Distribution Pole Replacements and Reinforcements	Assets	2,750	4,225	54%
Grid Design and System Hardening	Covered Conductor Installation: Tree Wire and Spacer Cable	Miles	125	175	40%
Grid Design and System Hardening	Installation of System Automation Equipment	Assets	2,540	1,258	-50%
Grid Design and System Hardening	Installation of System Automation Equipment (CFCI)	Assets	4,070	2,170	-48%
Grid Design and System Hardening	Grid Design and System Hardening: Other Technologies Not Listed Above	Assets	5,537	8,000	44%
Grid Design and System Hardening	Traditional Overhead Hardening	Miles	0	10	100%
Grid Design and System Hardening	Transmission Pole/Tower Replacements and Reinforcements	Assets	0	180	100%
Inspect/Correct	Asset Inspections	Miles	2,250	2,574	29%
Inspect/Correct	Fire Season Safety Patrols	Assets	71,500	124,321	74%
PSPS/Emergency Preparedness	Battery Programs	# of Medically Vulnerable Customers	200	50	-75%

# Areas for Continued Improvement

## Engagement



### PacifiCorp

- Public Safety Partners Definition
- Community Based Organization Outreach
- Customer and Partner Outreach Effectiveness
- Customer Battery Program Effectiveness

### Joint IOU: Phase 1

- Determination of WMP Compliance
- Transition to Multi-year WMPs
- Standard Reporting Templates: Programs, Inspection and Correction, Vegetation Management

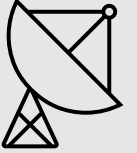
### Joint IOU: Phase 2

- Shared IOU Terminology
- Standard WMP Format
- Standard Reporting Templates: Industry Engagement, Technology Pilots, PSPS Event

### Joint IOU: After Phase 2

- Industry Collaboration: System Reliability Learnings, Public Safety Partner Coordination and Outreach, Customer and Community Outreach Regarding Operational Practices

## Situational Awareness



### PacifiCorp

- Risk Modeling: Climate Change, Fuels, Modeling Processes, Calculation
- Investigation of Equipment Failures and Risk Events
- Segment, Circuit, and Zone of Protection Risk Quantification
- System Risk Quantification

### Joint IOU: Phase 1

-

### Joint IOU: Phase 2

- Risk Model Calibration
- Foundational Risk Maps
- Cost Valuation

## Operational Practices



### PacifiCorp

- PSPS Restoration Practices

### Joint IOU: Phase 1

-

### Joint IOU: Phase 2

-

## System Resiliency



### PacifiCorp

- Grant Update
- Communicating Fault Circuit Indicator Deployment
- Inspection and Correction Optimization
- Vegetation Management Optimization

### Joint IOU: Phase 1

-

### Joint IOU: Phase 2

-



# Data Template Implementation

# Key Data Template Implementation Challenges

## Definitions

- Missing definitions, which could hinder comparisons and common understanding.

## Data Availability

- Data is available but is not combined in the ways required
- Data is not currently collected by PacifiCorp; proxy data is used where available.

## Transition Period

- Retroactive application of new categories and subcategories to work in progress

## Implementation Costs

Implementation cost range identified but want to ensure there is clarity on items like definitions and any format changes before completing detailed requirements to finalize costs.

Thank you