

2025 Wildfire Mitigation Plan

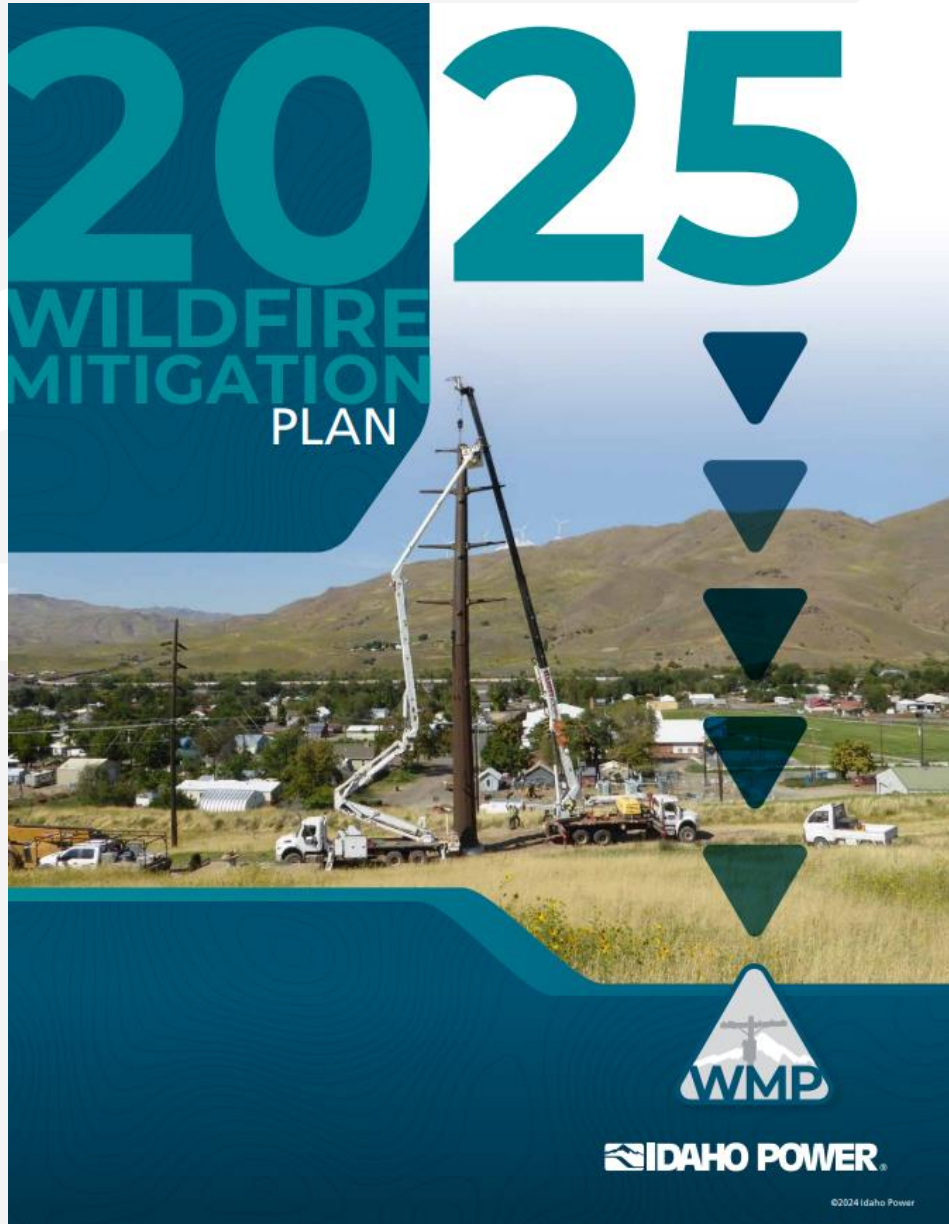
Jon Axtman

Wildfire Mitigation and T&D Engineering Director

Dani Southard

Wildfire Mitigation Program Leader





AGENDA

- Responses to Order No. 24-231 & Order 24-326
- 2024 Season in Review, Lessons Learned
- 2025 Initiatives and Targets
- Community Engagement and Outreach
- 2025 Wildfire Season Readiness

Idaho Power Wildfire Mitigation Plan

Appendix D: 2025 Oregon Wildfire Requirements and Recommendations

On December 31, 2024, Idaho Power filed a comprehensive **2025 Wildfire Mitigation Plan** which includes all key plan elements for the 2025 calendar year.

Appendix D of the 2025 WMP includes:

- Regulatory Compliance Index that maps Oregon Wildfire Mitigation Plan rules to sections in Idaho Power’s 2025 WMP.
- Comprehensive responses to recommendations from OPUC Staff in UM 2209 and UM 2340 and approved by the OPUC in Order Nos. 24-231 and 24-326, respectively.
- Responses to Joint Utility Recommendations from Order 24-326.

Oregon Requirements and Recommendations

This appendix provides additional information specific to wildfire-related requirements, as well as wildfire-related recommendations, in Oregon.

Oregon Administrative Rule (OAR) Regulatory Compliance Index

Below is a mapping of Wildfire Mitigation Plan rules to sections within Idaho Power’s WMP.

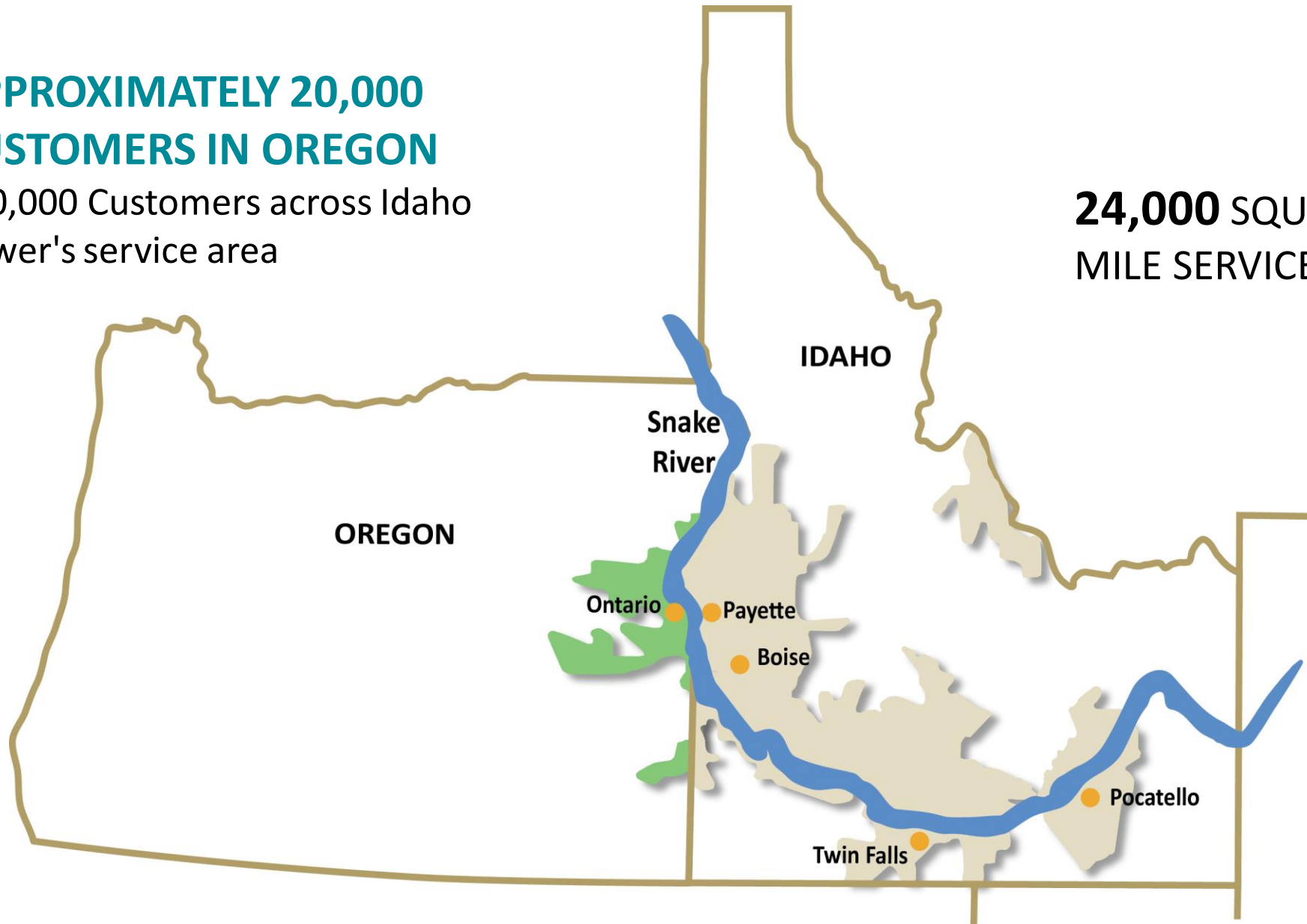
Wildfire Protection Plan Filing Requirements—OAR 860-300-0020

Oregon Requirement—OAR 860-300-0020	Corresponding Location in WMP
(1) Wildfire Mitigation Plans and Updates must, at a minimum, contain the following requirements as set forth in Section 3(2)(a)-(h), chapter 592, Oregon Laws 2021 and as supplemented below:	See Section 3: Quantifying Wildland Fire Risk
(a) Identified areas that are subject to a heightened risk of wildfire, including determinations for such conclusions, and are:	See Idaho Power website and Appendix C for details of wildfire risk zones outside of service area
(A) Within the service territory of the Public Utility, and	See Section 3.3: Wildfire Risk Zones
(B) Outside the service territory of the Public Utility but within the Public Utility’s right-of-way for generation and transmission assets.	See Section 3.3.2 and Figure 17: Boardman to Hemingway (B2H) Proposed Route Risk Zones
(b) Identified means of mitigating wildfire risk that reflects a reasonable balancing of mitigation costs with the resulting reduction of wildfire risk.	See Section 4.2: Risk-Based Cost and Benefit of Wildfire Mitigation
(c) Identified preventative actions and programs that the Public Utility will carry out to minimize the risk of utility facilities causing wildfire.	See Section 5: Situational Awareness; Section 6: Mitigation—Field Personnel Practices; Section 7: Mitigation—Operations; Section 8: Asset Management and Inspection Initiatives; and Section 8.7: Vegetation Management
(d) Discussion of outreach efforts to regional, state, and local entities, including municipalities regarding a protocol for the de-energization of power lines and adjusting power system operations to mitigate wildfires, promote the safety of the public and first responders and preserve health and communication infrastructure.	See Section 10.1: Objective and Section 10.2: Community Engagement See Appendix B: Idaho Power’s Public Safety Power Shutoff Plan, 10.1: Community Engagement and Section 10.4: Customer Communications

**APPROXIMATELY 20,000
CUSTOMERS IN OREGON**

640,000 Customers across Idaho
Power's service area

**24,000 SQUARE-
MILE SERVICE AREA**



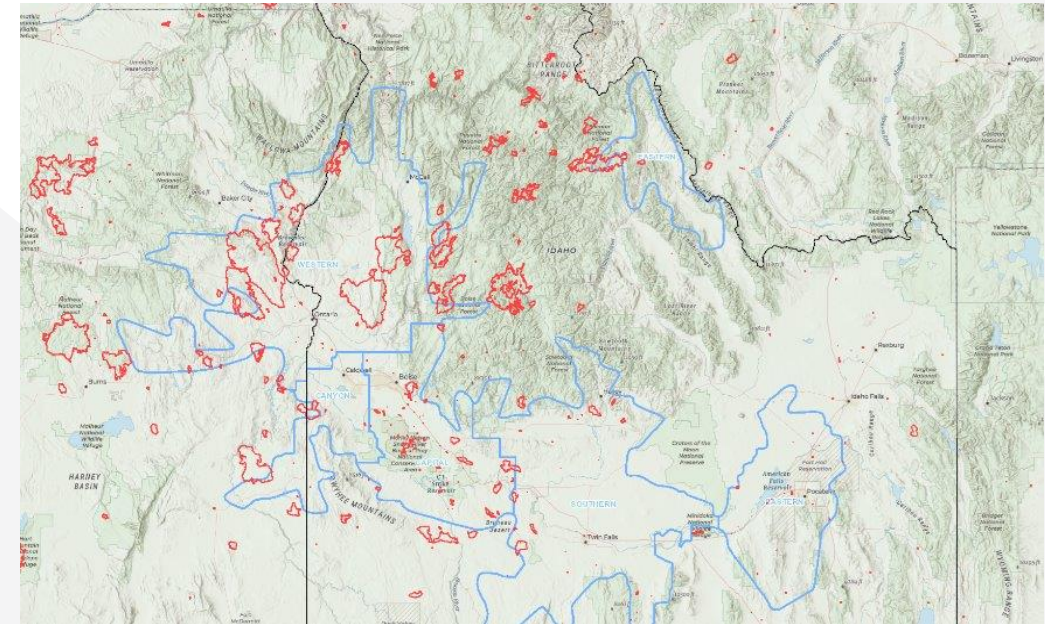
2024 Wildfires Affecting Idaho Power's System

OREGON SERVICE AREA

Metric	2024	30-year average	% difference between 2024 and Avg.
# of wildfires	86	83	104%
Acres Burned	882,091	488,959	180%

IDAHO POWER'S FULL SERVICE AREA (IDAHO & OREGON)

Metric	2024	30-year average	% difference between 2024 and Avg.
# of wildfires	252	235	107%
Acres Burned	1,509,455	860,275	175%



Fire Perimeters as of 12/1/2024



Durkee Fire (Lightning Caused)

2024 Wildfires Affecting Idaho Power's System

- **46 outages due to wildfire** (for safety or at the request of a fire agency)
 - 23 outages affecting customers
 - 23 transmission outages that did not affect customers

- Stood up emergency operations to monitor fire behavior and movement

- Hired firefighting contractors to protect Idaho Power infrastructure and crews



2024: Idaho Power PSPS event in Idaho

- Idaho Power's Meteorology team tracked incoming widespread high wind event on days leading up to July 24th
- The company managed numerous ongoing wildfires across eastern Oregon and western Idaho



Durkee, Cow Valley, and Bonita Fires Update for Wednesday, July 24, 2024

541-208-4371, staffed 7AM to 7PM PDT

2024.durkee@firenet.gov

DURKEE FIRE: Start date: July 17, 2024 | Location: 5 miles southwest of Durkee, OR | Personnel: 526 | OSFM Task Forces: 4 | Fire size: 244,858 acres | Cause: Lightning | Containment: 0%

Today's weather will lead to extreme fire behavior and growth. A Red Flag Warning has been issued for severe thunderstorms and will be followed by a Flash Flood Watch. Thunderstorm wind gusts may reach 75 mph and are expected to directly impact the Durkee Fire footprint. Burned areas are more susceptible to landslides, mudslides, flash floods and debris flow. The amount of rainfall is not known at this time, but 15/100 of an inch of precipitation in 15 minutes could be enough to cause debris flows.

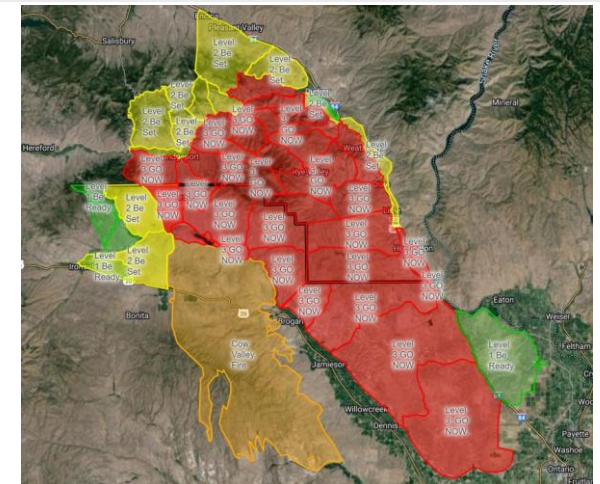
07-25-2024 | IMPACT

The Durkee wildfire is the largest in the U.S. High winds and thunderstorms are making it worse

The Durkee Fire is burning near the Oregon-Idaho border.

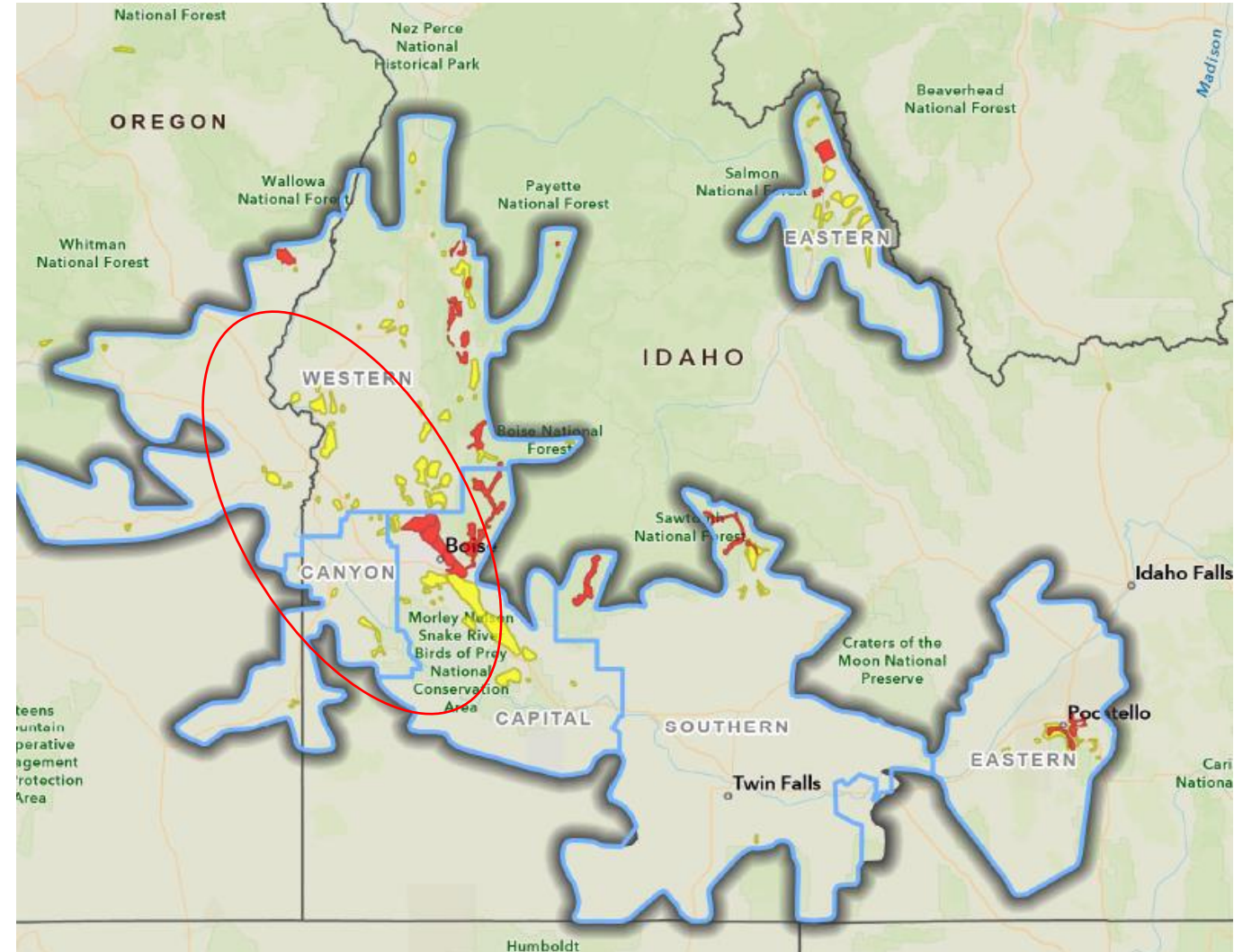


In this photo provided by the Oregon Department of Transportation, the Durkee Fire lights up the sky in eastern Ore., Monday, July 22, 2024. [Photo: Oregon Department of Transportation via AP]



2024: Idaho Power PSPS event in Idaho

- On the morning of July 24, 53 zones were in scope for PSPS with 44,000 customers in Idaho and Oregon
- Enabled Mode 2 EPS in each wildfire risk zone (WRZ) in scope
- July 24th outages
 - 8,845 customers – Idaho only (PSPS)
 - 334 customers – Oregon (Mode 2)



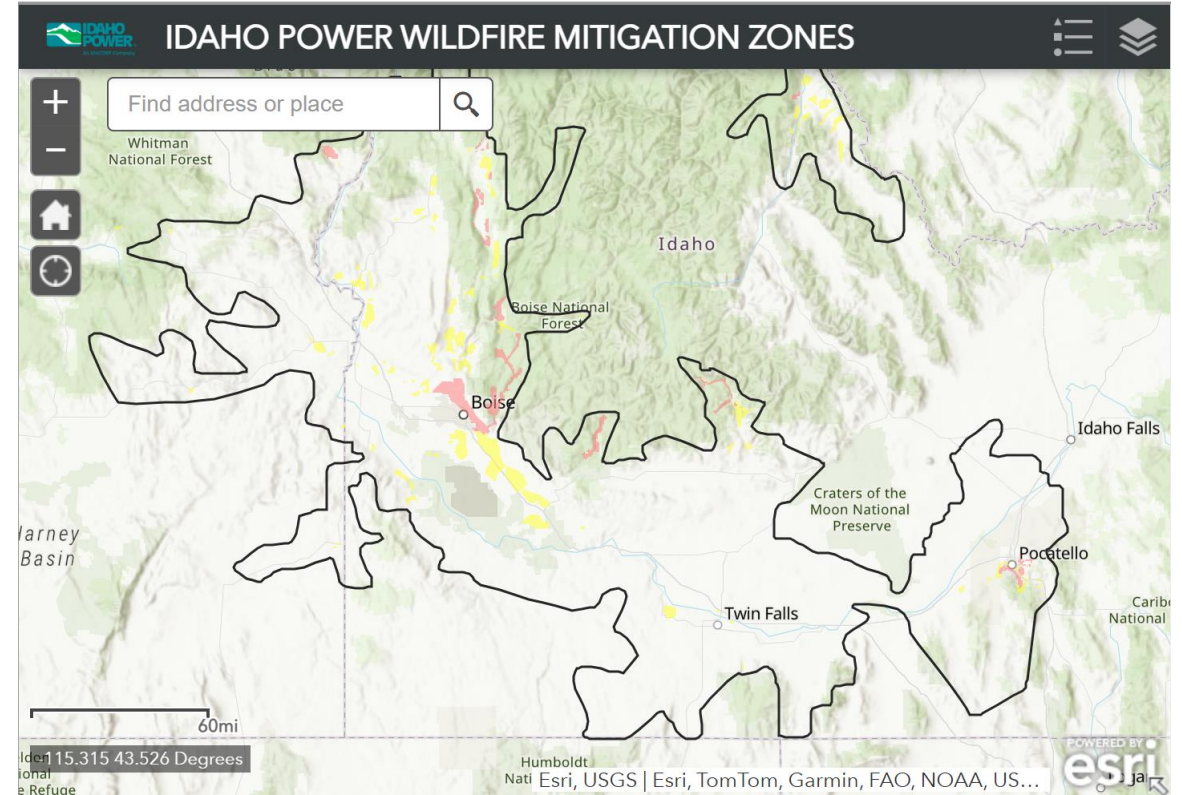
Lessons Learned from 2024 Season

- **Continue installation of weather stations**
 - More wind data
 - Less reliance on field observers
- **Continue installation of sectionalizing devices**
 - Decrease the impact on customers outside of WRZs
 - Continue adding remote communication to devices (SCADA)
- **Customer communication**
 - Explore tools to better coordinate pre- and post-outage messages
 - Improve templates to better explain how outages can be storm-related prior to PSPS

2025 Initiatives and Targets

2025 Wildfire Risk Zones

- **No changes were made to wildfire risk zones in Oregon for 2025**
- Ten WRZs in Idaho Power’s Oregon service area
 - 80 miles of overhead distribution in WRZs
 - 16 miles of transmission in WRZs
- Eastern Oregon communities with WRZs include:
 - Juntura
 - Jordan Valley
 - Unity
 - Vale
 - Halfway



Idaho Power’s Wildfire Risk Zones can be searched by City or address on our website at [Idahopower.com/wildfire](https://idahopower.com/wildfire)

Core Mitigation Initiatives

- Vegetation Management
- Asset Inspections
- Overhead Circuit Hardening
- Situational Awareness



2025 Mitigation Targets: Oregon



2025 Mitigation Targets				
Initiative	Activity	2024 Oregon Target	2024 Oregon Actuals	2025 Oregon Target
System Hardening	Distribution System Hardening	design in 2024	4 miles of designed & implemented (ahead of schedule)	5 miles
		implement in 2025		
Fire Resistant Wrap	Transmission Mesh Wrap	68 poles	90 poles	56 poles
Feeder Segmentation	Installation or relocation of automatic reclosing devices	7 devices	9 devices	3 devices
Situational Awareness	Weather Station Installation	1 station	1 station	5 stations
	Wildfire detection cameras	evaluate	evaluated, site selected for 2025	1 camera

2025 Mitigation Targets: Asset Inspections

- Ignition Prevention Inspections
 - 341 transmission structures
 - 1,780 distribution poles
- Infrared Thermography
 - 341 transmission structures
 - 1,000 distribution poles
- Other Routine Inspections
 - Detailed visual inspections (10-year)
 - Groundline pole inspection and treat (10-year)
- Technology
 - Aerial inspection pilot
 - Beyond visual line of sight waiver for drones



2025 Mitigation Targets: Vegetation Management

- Transition to 3-year Pruning Cycle
 - 37 circuits
- Enhanced Vegetation Management
 - Annual inspections – 13 circuits
 - Mid-cycle patrols
 - Hazard trees identified and mitigated
 - Audits of all pruning activities in wildfire risk zones – 100%



Pilot Project Update

- Line Monitors
 - Fault detection and locating
 - Advanced anomaly detection
- Covered Conductor
 - Completed 1-mile installation in Idaho
 - Completing design standards, training plan, and work practices for rubber gloving
- Wildfire Detection Cameras
 - Completed 5 installations in Idaho
 - Developing plans with the Oregon Wildfire Detection Interoperability Committee
 - Targeting 1 installation in Oregon in 2025
- Fuel Reduction/Shared Stewardship



Enhanced Protection Settings (EPS)

Continuing two mode settings in 2025 for devices that protect WRZs

- Mode 1: Seasonal change, reclose off
- Mode 2: Decreased time delay on higher fire potential days



HOW IDAHO POWER EQUIPMENT AUTOMATICALLY REDUCES WILDFIRE RISK

- 1 When an object touches a power line or a fault occurs...
- 2 Protective devices automatically turn off power. ((⊘))
- 3 Our crews patrol the lines by ground or air. They check for damage or obstructions before restoring power.

For more information, visit idahopower.com/wildfire.

Risk Modeling Quantification

- In 2024, Idaho Power began integrating Technosylva Wildfire Analyst Enterprise (WFA-E) software into the company's wildfire risk identification and quantification.
- Integration will continue through the first half of 2025, with operational testing during the 2025 wildfire season.
- **Key benefits:**
 - Risk modeling uses current and forecasted weather, every 3-hours
 - Impact and consequence analysis
 - On-demand fire spread simulations



Ignition Tracking

- Developing program to create and measure metrics for ignitions
- Standing up a dedicated team to evaluate patterns
- Goal of developing prevention strategies based on lessons
- Monitor progress over time

Idaho Power WMP Risk Management Framework



Outreach and Communications

Outreach and Communication Objectives

- Idaho Power's commitment to safety
- Customers are aware of Idaho Power's wildfire mitigation efforts
- Customers are informed of PSPS considerations and impacts
- Idaho Power supports customer preparations for wildfire season, including emergency and outage preparation tips and checklists
- Customers can find outage information
- Customers understand the importance of updating contact information



Core Approaches

- Website, email, social media, digital ads, newsletters, flyers, radio ads
- Virtual meetings (English and Spanish)
- In-person events — In partnership with local agencies, we conduct public education regional outage preparedness events.
 - Hold at least one meeting in each county we serve
 - Format is adjusted to fit the community (presentation, open house format, etc.)



Public Safety Power Shutoff

Our records show your property in the Halfway area is in or near a wildfire risk zone and could be impacted in the event of a Public Safety Power Shutoff (PSPS). All customers should be prepared for a PSPS or other wildfire-related outage. However, customers living in or near higher wildfire risk areas are more likely to experience a PSPS.

What is a PSPS?

A PSPS is when an electric company like Idaho Power proactively turns off the power to an area where wildfire risk is high due to extreme weather conditions.

A PSPS is a last resort. We work year-round to protect the grid and avoid wildfires. However, if weather conditions lead to extreme fire risk, we might need to call a PSPS.

If a PSPS is necessary, we will provide as much notification as possible. Please update your contact information at idahopower.com/contactupdate to ensure we can reach you in an emergency.

- High Temperature
- Low Humidity
- High Winds
- Dry Vegetation

Come Learn More at an Upcoming Public Meeting!

Date/Time: May 29th / 6-8 p.m.

Location: Lions Club
235 Lion St, Halfway, OR 97834

Join us to learn about:

- How Idaho Power is working to keep our communities safe and reduce fire risk
- What a PSPS is, including where and when we might need to call an event
- How you can be prepared for wildfire season and potential outages

We'll be available to answer your questions and update your contact information if needed. We hope you'll join us!

© 2024 Idaho Power CID#59933

Core Approaches (cont.)

- Collaborate with state, county, and city emergency managers to develop joint community outreach and response plans
- Meet with county and city public safety partners before each fire season to review PSPS plans
- Present the Wildfire Mitigation Plan (WMP) and Public Safety Power Shutoff (PSPS) plan to each active Local Emergency Planning Committee in our service area
- Share outage preparation information with all critical facilities – mail, email, verbal contact to select facilities to convey this information and update emergency contact details as needed



Examples from 2024

Newsletter

Flyer

CONNECTIONS

IDAHO POWER

MAY • 2024

Public Safety Power Shutoffs: A Tool to Keep Our Communities Safe

Idaho Power Investments Protect the Grid and Reduce Wildfire Risk

Idaho Power is investing in grid improvements to protect our power lines, substations, and other equipment from wildfires. Our investments also help reduce the chance our equipment or operations will contribute to a fire. Here are a few examples of the work we're doing:

- Burying strategically chosen sections of overhead lines
- Using infrared imaging and other technologies to monitor equipment for defects
- One way we can reduce wildfire risk is by changing our operations in areas where wildfires are most likely. For example, we might turn off reclosers, which automatically re-energize a power line after an interruption, like a tree branch touching a wire. So instead of a momentary flicker like you might have experienced, if our lines are power would...

Prepare Now in Case of Summer Outages

Summer is almost here! This is a great time to get outdoors and enjoy the best of southern Idaho and eastern Oregon. Before you do, don't forget to prepare for summer power outages so you and your family aren't caught off-guard if the unexpected happens. Here are our top three tips:

1. Update your contact information
2. Make a plan

WHAT IS A PSPS?

IDAHO POWER

A public safety power shutoff, or PSPS, is when an electrical utility like Idaho Power proactively turns off power to an area where wildfire risk is high due to extreme weather conditions. The outage is an effort to keep our customers, communities, employees, and equipment safe.

Safety is a core value for Idaho Power — the safety of our customers, employees, and communities is at the forefront of everything we do. That's why we've developed a Public Safety Power Shutoff (PSPS) plan. A PSPS is when an electric company like Idaho Power proactively turns off power to an area where wildfire risk is especially high due to extreme weather conditions, usually some combination of high temperatures, strong winds, and dry conditions. "The last few decades, wildfires have become more frequent and intense in Idaho and Oregon," said Jon Artman, Idaho Power's Transmission and Distribution Engineering and Reliability Senior Manager. "In response, we have expanded our focus on reducing wildfire risk. A PSPS is a last resort, but it's an important tool for protecting the people and places that make this area so special." Why is PSPS a last resort? Because keeping your lights on is important to Idaho Power. Safety and reliability are the reasons we work year-round to reduce risk. We build power lines and substations to meet or exceed industry standards. We carefully monitor and maintain that equipment, replacing or upgrading it as needed. During wildfire season, the company's team of atmospheric scientists watches the weather 24 hours a day to help guide our decisions on safety precautions. One of the ways we can reduce the chances of a PSPS is by increasing the sensitivity of protection equipment. This allows power lines in areas with increased wildfire risk to automatically turn off much more quickly than they normally would when a fault is detected, reducing the chance that debris blowing in the wind will touch the lines and spark a wildfire. All customers should be prepared for outages, including a PSPS. Make a plan, prepare for medical needs, and update your contact information at idahopower.com/contactupdate so we can reach you if an emergency arises. Customers who live in especially high wildfire risk areas should also be prepared to reach out with phone calls or texts throughout the event. You can also check idahopower.com for the latest updates. We're proud of our record of reliability. Most customers are without power for less than three hours a year. But it's important to recognize that a PSPS outage could last much longer and prepare accordingly. "We know our customers depend on power for their farms, homes, and businesses," Artman said. "That's why we work so hard to build, maintain, and protect the grid, and to reduce the risk of fire. But if weather conditions warrant a PSPS for safety reasons, we will be prepared." For more information, visit idahopower.com/wildfire.

Idaho Power

Published by Lex Freeman

May 3

Tomorrow is Wildfire Community Preparedness Day. Every summer, wildfires are a threat to our homes, businesses, farms, and forests. They can also cause power outages. Here are some ways to keep you and your family from getting caught off-guard in a summer outage, regardless of the cause.

- ✓ Plan for needs like refrigerated medicine or powered medical equipment
- ✓ Find a way to water livestock in case pumps lose power
- ✓ Update your contact information: idahopower.com/contactupdate

From the Electric Kitchen: Berry Trifle

Recipe selected from Idaho Power's Centennial Celebration

- 1 prepared angel food cake
- 4 cups fresh strawberries, sliced
- 2 cups milk
- 8 ounces nonfat vanilla yogurt
- 1 package (3.5 ounces) instant white chocolate or vanilla pudding mix
- 2 Tbsp sliced almonds
- ½ tsp almond extract

Prepare pudding according to package directions, slightly thickened, stir in yogurt and almond extract. Place 1/3 of them in the bottom of a deep glass pie dish and then layer in 1/3 of the fruit. Repeat & for at least four hours (preferably overnight). Uncover. Serve chilled. Makes 12 servings.

BE WILDFIRE READY

Update your contact information in case of outages.

CONTACT INFO

Digital Ad

Social

Fire season is coming.

Wildfires can cause power outages. Make sure you prepare.

When is a PSPS used?

A PSPS is a last resort to prevent wildfires. From trimming trees to wrapping poles in fire-resistant mesh to maintaining and inspecting our equipment, wildfire mitigation is part of year-round, everyday operations at Idaho Power. However, if high winds, dry vegetation, or other weather conditions lead to extreme fire risk, Idaho Power might need to call a PSPS. The decision to call a PSPS is based on forecasts and on-the-ground observations of many factors, including:

- High Temperature
- Low Humidity
- High Wind
- Dry Vegetation
- Public Safety

How will customers be notified?

Idaho Power will provide as much advance notice as reasonably possible to help you prepare for a PSPS event. As much as we can, we'll keep you informed throughout an event using text messages, phone calls, and emails. We'll try to follow this schedule as closely as events allow:

- 1-2 Days Prior: PSPS Watch (Sent when a PSPS event is likely)
- 1-4 Hours Prior: PSPS Warning (Sent when a PSPS event is approaching)
- Outage Begins: PSPS Outage Alert (Sent when the PSPS outage begins)
- Updates: PSPS Updates (Sent as needed and when restoration work begins)
- Power Restored: PSPS Over (Sent when power has been restored)

Community Survey & Customer Feedback

- In 2024 Idaho Power sent a customer survey seeking feedback on a variety of topics including perceptions of risk and support for mitigation measures.
- These surveys help inform outreach efforts.
- Compared survey results to our 2023 survey. High-level takeaways included:
 - **78%** would support the use of PSPS in extreme weather conditions to reduce the risk of wildfire (*up from 71% in 2023*).
 - **63%** recalled hearing or receiving information about PSPS from Idaho Power or through the media (*up from 9% in 2023*).
 - **43%** recalled getting information about how Idaho Power is working to reduce wildfire risk (*up from 27% in 2023*).
 - **61%** recalled receiving information about how to prepare for outages (*up from 34% in 2023*).

Wildfire Season Preparations

2025 Readiness Initiatives

- WMP trainings for employees and contractors
- Vehicle audits
- Pre-season patrols
- Scheduling outreach and public engagement activities with Public Safety Partner feedback
- Enhanced protection settings preparation
- Ignition tracking processes
- RSE development/workshops
- Wildfire encroachment processes review
- PSPS tabletop exercise
- Atmospheric Science preparations
- Wildfire team expansion and training



THANK YOU

**Learn More and Access our
2025 Wildfire Mitigation Plan**
idahopower.com/wildfire