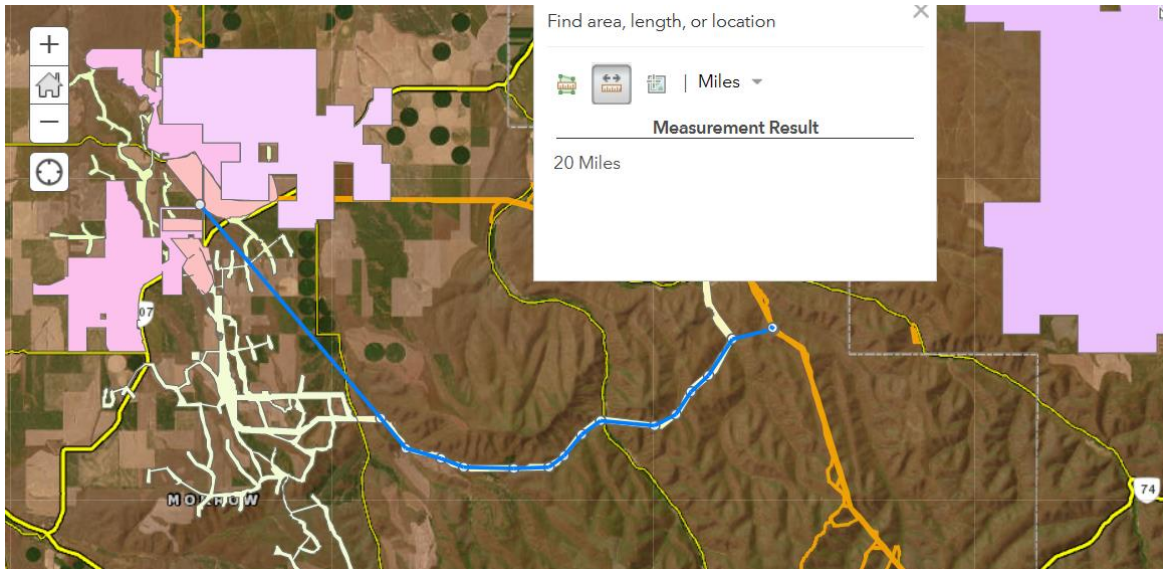
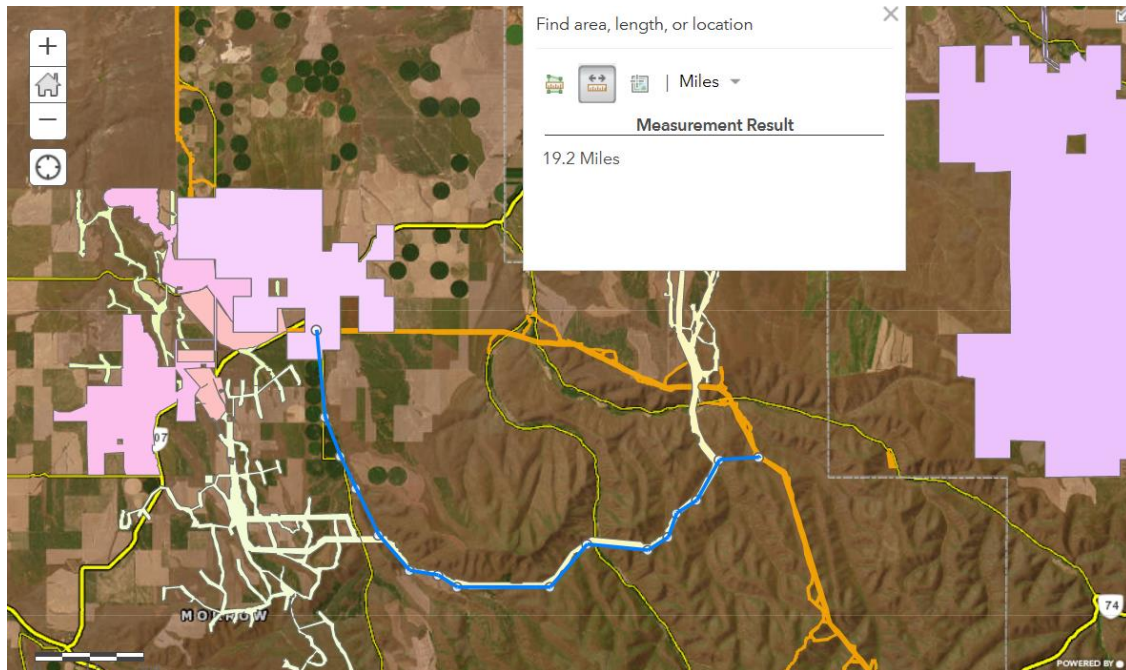


Exhibit 1: New Alternate Route Option A (blue) IPC proposed route (orange)



Option A is an alternate route that leaves the proposed route at MP 19.3 and continues its South East trajectory to the point on Spur Loop Road that intersect the Wheat Ridge Renewable Energy Facility East. It parallels the Wheat Ridge corridor south of Gleason Butte, departs the corridor at Ayers Canyon and reconnects with the proposed route at MP 36.

Exhibit 2: New Alternate Route Option B (blue) IPC proposed route (orange)



Option B is an alternate route that leaves the proposed route at MP 22.2 and travels South to the point on Spur Loop Road that intersect the Wheat Ridge Renewable Energy Facility East. It parallels the Wheat Ridge corridor south of Gleason Butte, departs the corridor at Ayers Canyon and reconnects with the proposed route at MP 36.